

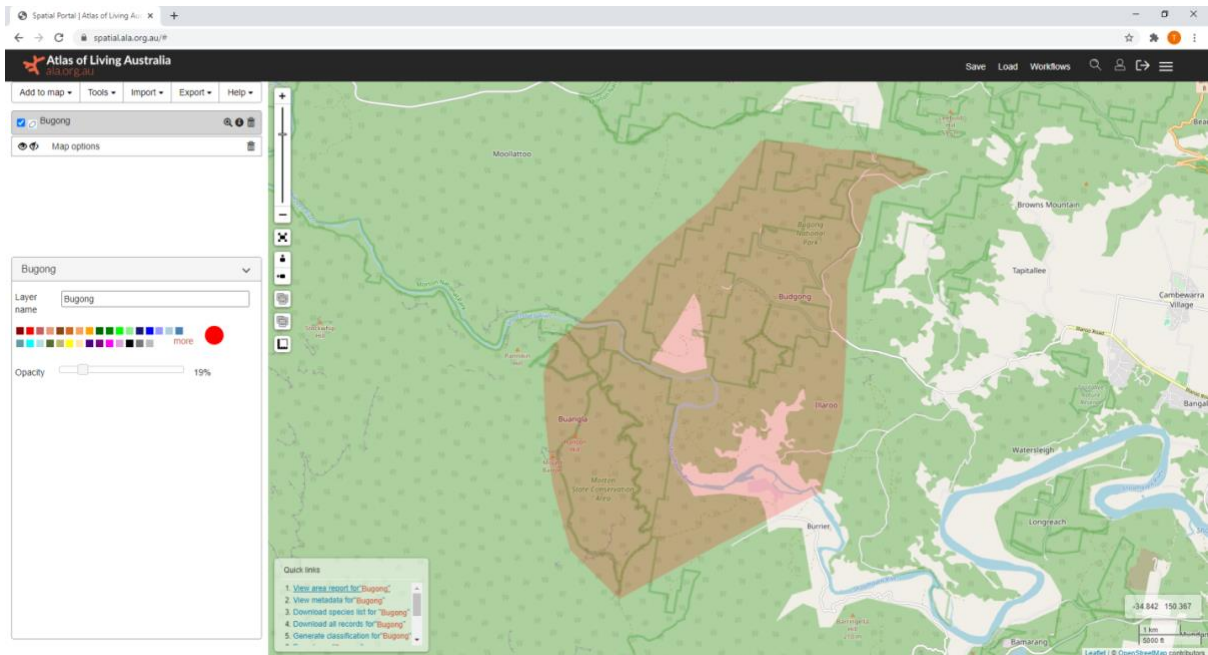
## Bimberamala

The screenshot shows the Atlas of Living Australia Spatial Portal interface. The browser address bar displays 'spatial.ala.org.au'. The page header includes the logo 'ATLAS of LIVING AUSTRALIA sharing biodiversity knowledge' and navigation links: 'Home | Dashboard | Save session | Log in'. A search bar is present with the text 'Search the Atlas'. Below the header, a red navigation bar contains 'Add to Map', 'Tools', 'Import', 'Export', and 'Help'. The main content area is titled 'Bimberamala' and features a 'Map options' sidebar. This sidebar includes a 'Layer name' field set to 'Bimberamala', a 'Facet' dropdown set to 'User defined colour', a color selection palette, and sliders for 'Red' (set to 255), 'Green' (0), 'Blue' (0), and 'Opacity' (40%). There is also a checkbox for 'Display spatial uncertainty as a circle'. Below these are 'Quick links' for viewing reports, metadata, and downloading species lists. The map itself shows a large red-shaded area in the Bimberamala region of Tasmania, with labels for 'Budawang National Park' and 'Murrumarang National Park'. A scale bar indicates 10 km and 5 mi. The bottom right corner shows coordinates: 'Lon: 149.86082' and 'Lat: -35.34448'. The footer includes 'Map data ©2013 Google'.

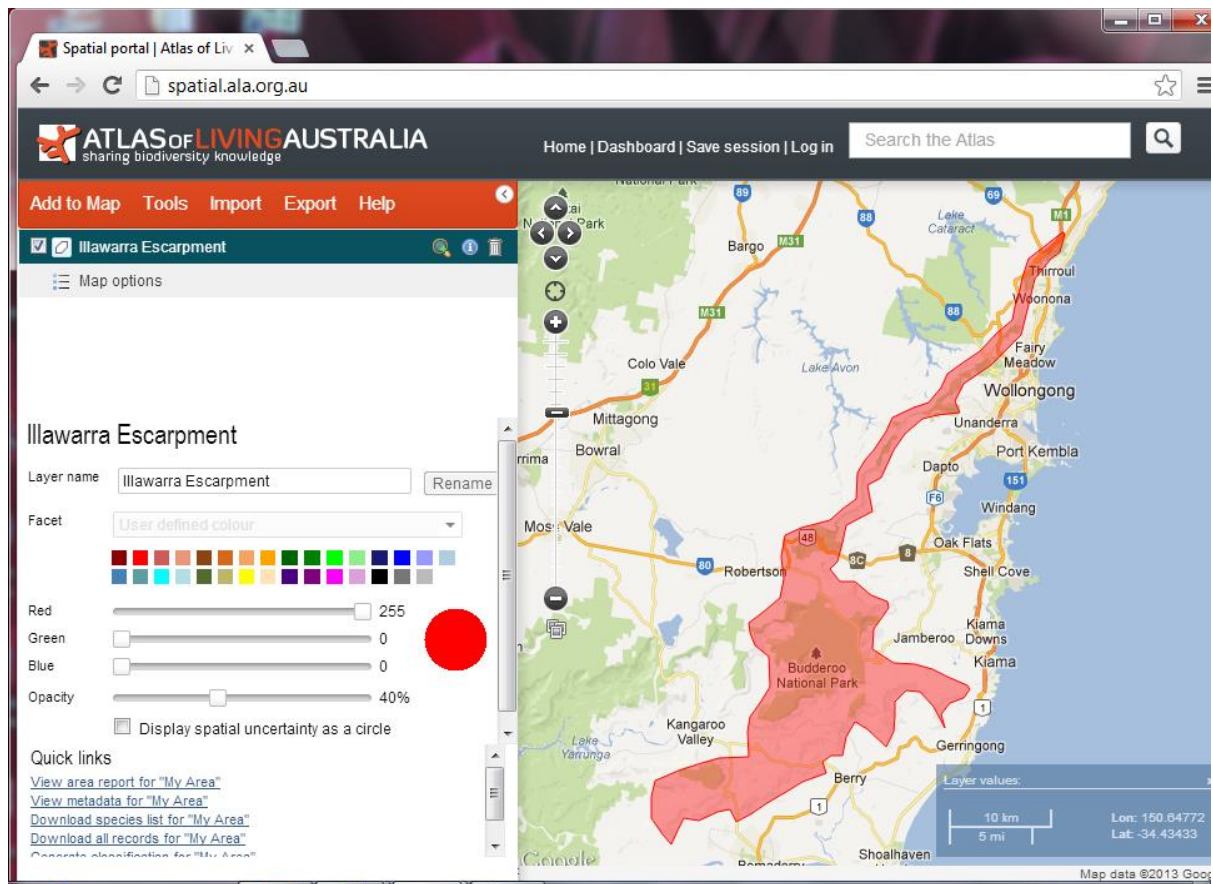
## Budawang

The screenshot shows the Atlas of Living Australia Spatial Portal interface for the Budawang National Park area. The browser address bar displays 'spatial.ala.org.au'. The page header includes the logo 'Atlas of Living Australia' and navigation links: 'Save', 'Load', 'Workflows', and a search icon. Below the header, a red navigation bar contains 'Add to map', 'Tools', 'Import', 'Export', and 'Help'. The main content area is titled 'Budawang NP' and features a 'Map options' sidebar. This sidebar includes a 'Layer name' field set to 'Budawang NP', a color selection palette, and an 'Opacity' slider set to 18%. Below these are 'Quick links' for viewing reports, metadata, and downloading species lists. The map shows the Budawang National Park area highlighted in brown, surrounded by green forested areas. Labels include 'Budawang National Park', 'Yellford State Forest', 'Flat Rock State Forest', 'Clyde State Forest', 'North Braemar State Forest', 'South Braemar State Forest', 'Bimberamala National Park', 'Shallow Crossing State Forest', and 'Magood'. A scale bar indicates 3 km and 1 mi. The bottom right corner shows coordinates: '150.25' and '35.308'. The footer includes 'Map data ©2013 Google'.

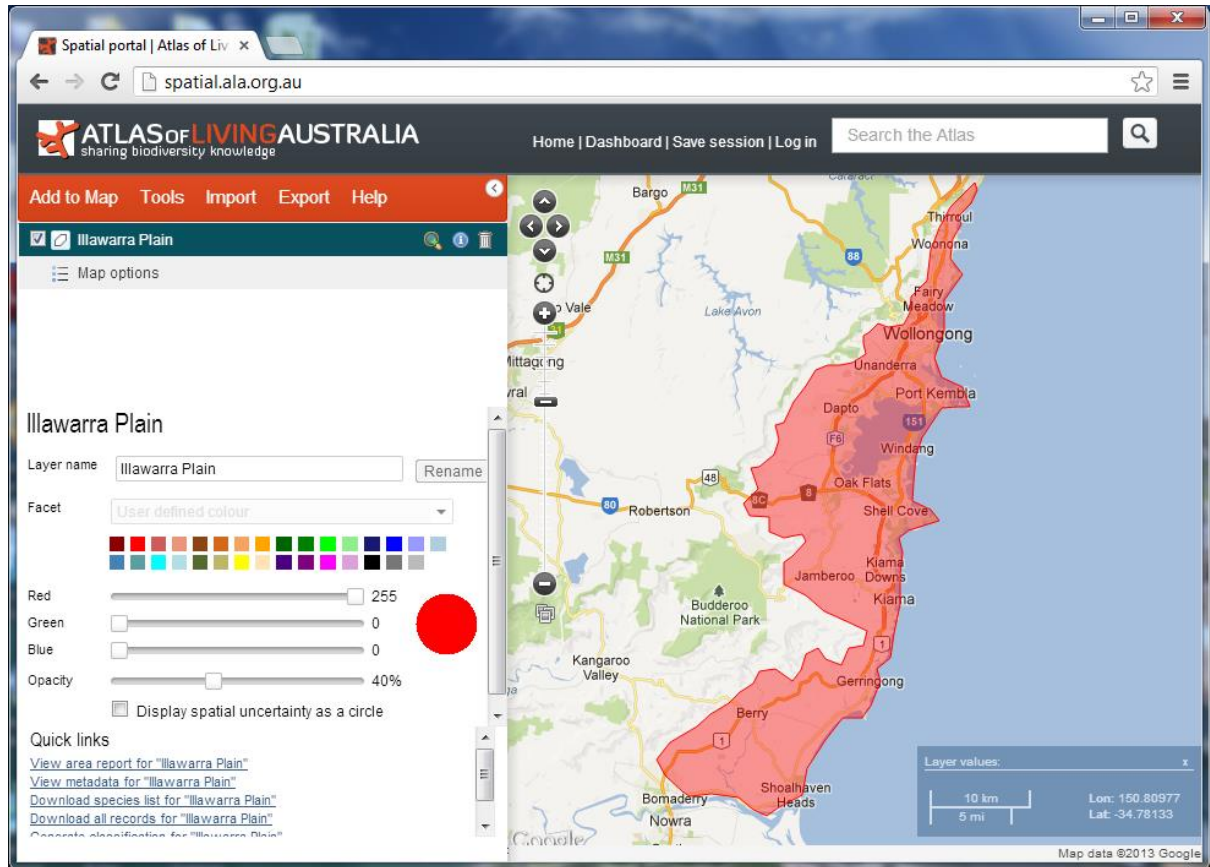
## Bugong



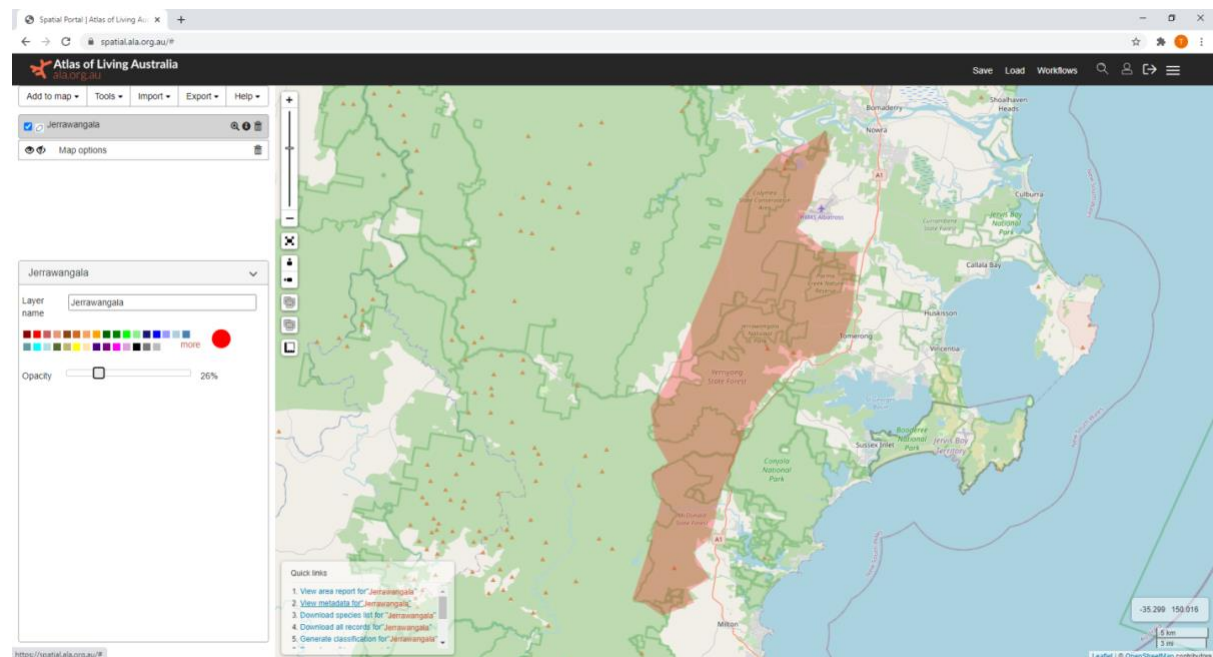
## Illawarra Escarpment



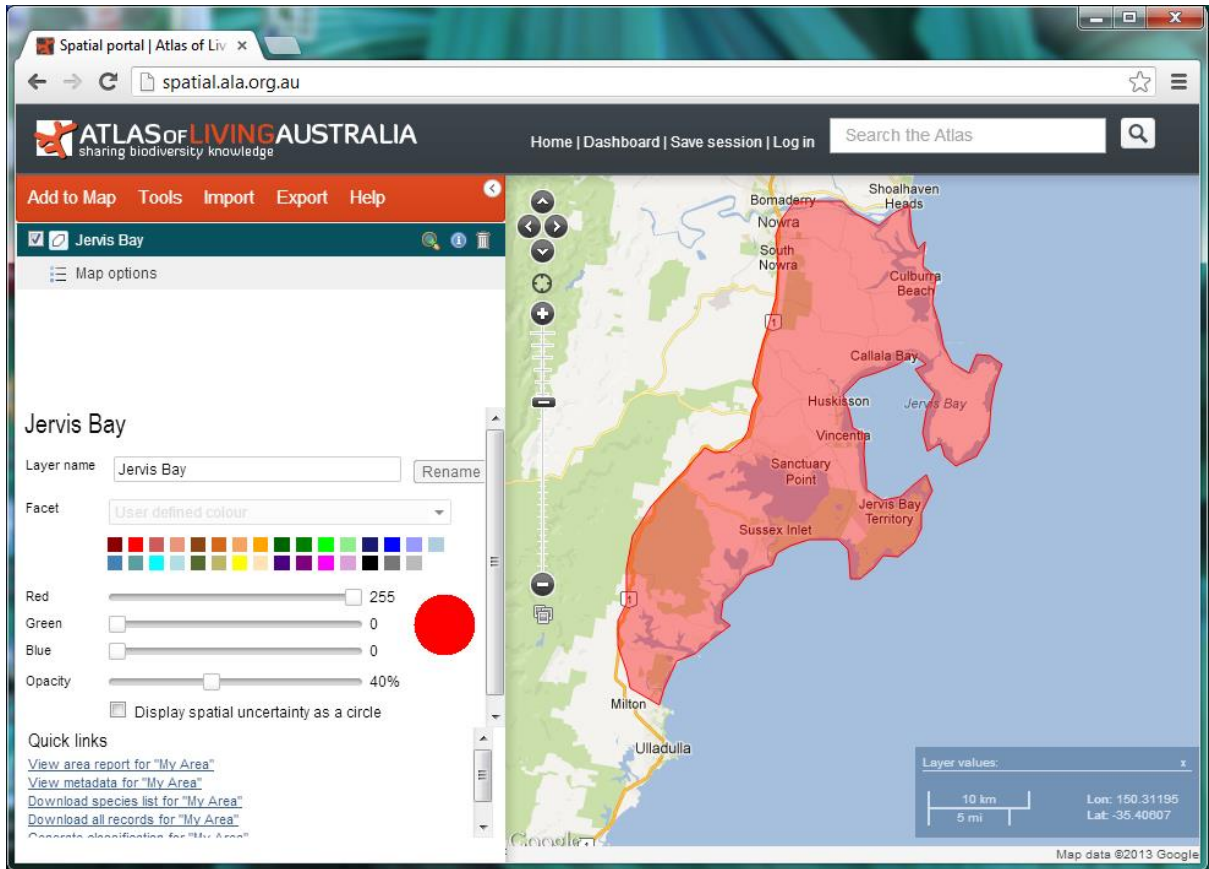
## Illawarra Plain



## Jerrawangala







## Morton

